

BALLINA - CASTLEBAR - WESTPORT INTERURBAN GREENWAY

Public Consultation

3rd of May to 17th of May 2024

www.bcwmayo.ie



Comhairle Contae Mhaigh Eo
Mayo County Council



An Roinn Iompair
Department of Transport



Rialtas
na hÉireann
Government
of Ireland

Yionscatal Éireann
Project Ireland
2040

Introduction to the Project

Mayo County Council, in partnership with Transport Infrastructure Ireland and the Department of Transport, are exploring the feasibility of an Interurban Greenway connecting Ballina, Castlebar and Westport.

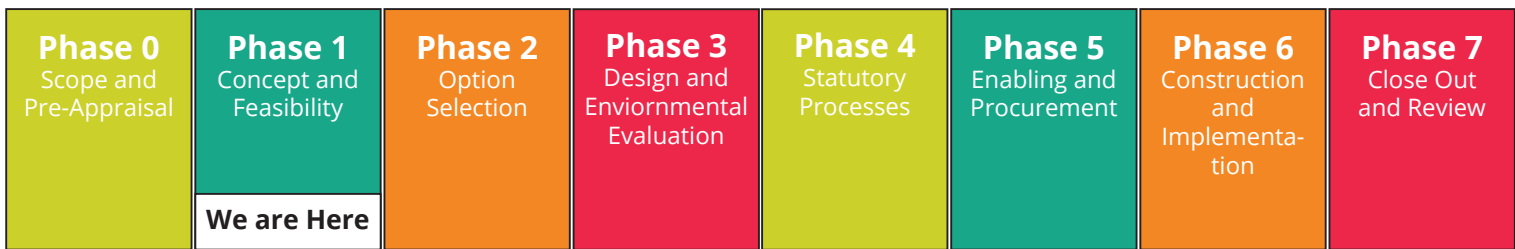
The Ballina – Castlebar – Westport Interurban Greenway (BCWIG) Project aims to provide an attractive, safe, and sustainable Interurban Greenway between the three largest settlements in Co. Mayo in line with governmental policy and will for part of the National Cycle Network.

BCWIG will act as a valuable corridor offering a healthy modal option for all users, providing enhanced access to the wider region, enticing users to explore its surrounding towns and villages and further develop both the commuter and tourism potential within the region, bringing benefits to the local economy.

What's happening Now?

Mayo County Council have commissioned engineering design consultants, Barry Transportation, to progress the scheme development. The project is progressing in accordance with the TII Project Manager's Manual for Greenway Projects and is currently at Phase 1 (Concept and Feasibility) having already successfully passed through Phase 0 (Scope and Pre-Appraisal) in 2023.

As part of Phase 1 (Concept and Feasibility), a Study Area has been identified and the project team are now in the process of identifying constraints that may influence option selection, and any key features or opportunities that would enhance the user experience.



Your Involvement – Public Consultation 1

Mayo County Council is now inviting all interested parties to participate in a non-statutory public consultation on the study area. The purpose of Public Consultation 1 is to bring information to the public on the project and to invite feedback on the current study area, the constraints identified and any other opportunities that the project team should consider. Your participation in this consultation is important and we would value any feedback which you think should be reviewed by the project team to help inform the development of the project.

Study Area, Constraints/ Opportunities

The Study Area encompasses an area from Ballina to Castlebar to Westport. The total distance is circa. 50km. Existing infrastructure will be incorporated where available such as the Castlebar to Turlough Greenway.

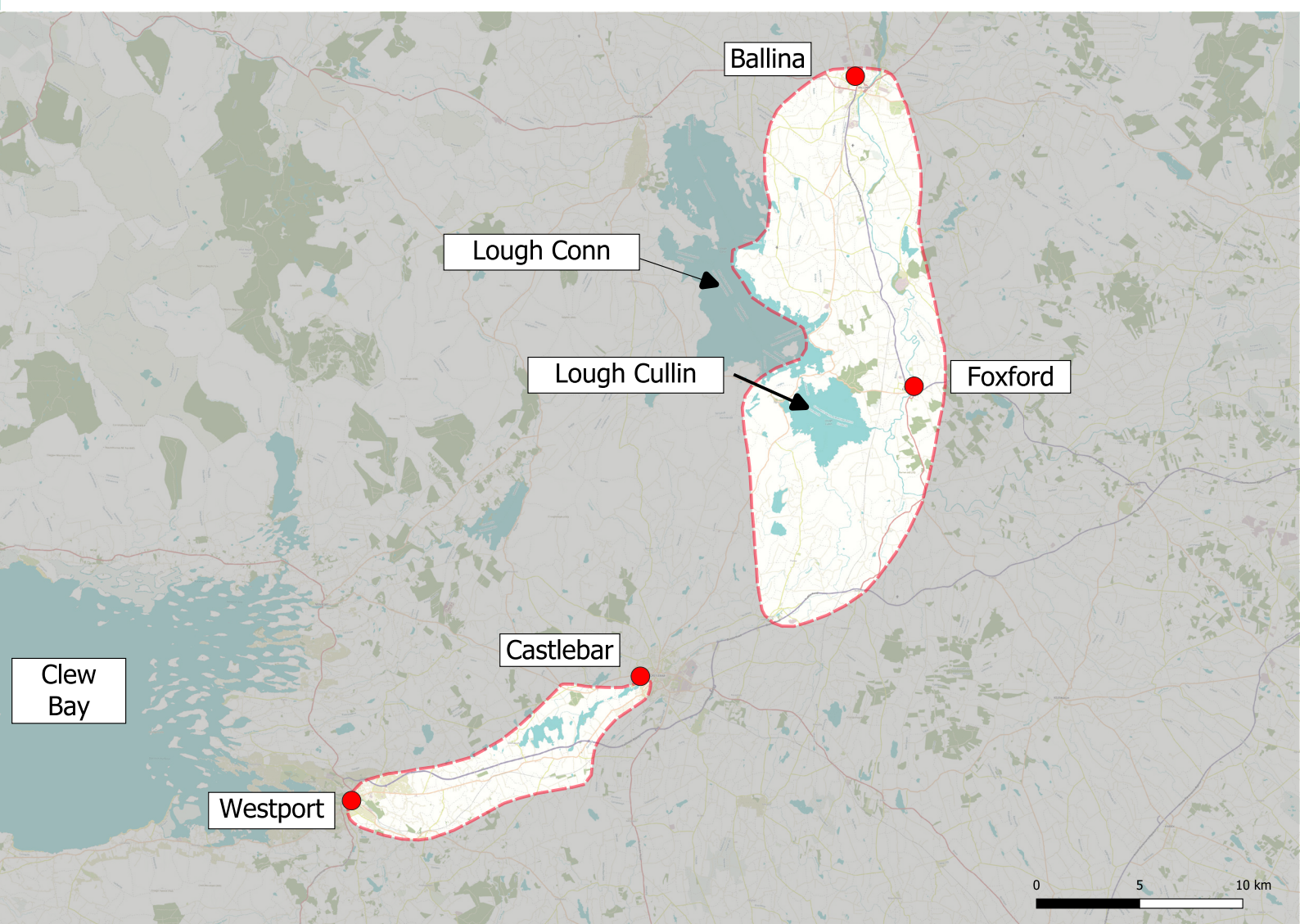
The Constraints Study is the identifying of all the physical/artificial/engineering/naturalelements within the study area which it is expected that options will be developed and examined.

The development of this greenway may present opportunity for new eco-tourism and active travel businesses to capitalise on the growing market, such as the development of bike tours,

bike repair/ sales, walking tours and food and beverage retailers.

The considerations used to establish the study area are the:

- Overall scheme objectives.
- The “Five S” criteria – Scenic, Sustainable, Segregated, Offer Lots to See & Do, Strategic.
- Environmental Impacts.
- Engineering.
- Finance Considerations.



Study Area Map

Next Stages

The feedback and submissions received through this public consultation will be considered by the project team as part of Phase 1 (Concept and Feasibility) and will help to inform the development of the project.

The next stage of the process involves the development of all reasonable options, which will then be subjected to an Options Assessment to identify and determine that there is at least one feasible option. A summary of the Options Assessment and recommended option(s) proposed for advancement to Phase 2 (Options Selection) will be prepared.

In Phase 2, a second period of non-statutory public consultation will be held, where the public will again be invited to make submissions and comment on the Proposed Options prior to a Preferred Option being identified.



www.bcwmayo.ie



Public Display

Virtual Public Consultation Meetings:

As part of the public consultation for this phase of the project, dates have been scheduled to allow members of the public to meet either online or in-person with members of the project team.

Scheduled appointments are available on the following dates:

9th, 15th, 16th, 21st, 22nd of May.

Appointments on each day will be available from 10.00am to 1.00pm.

Feedback

Submissions regarding the project can be made via:

website: www.bcwmayo.ie

email: bcwmayo@mayococo.ie

post: BCW Mayo Project Team. Mayo National Roads Office, Glenpark House, The Mall, Castlebar, County Mayo. F23 XF40